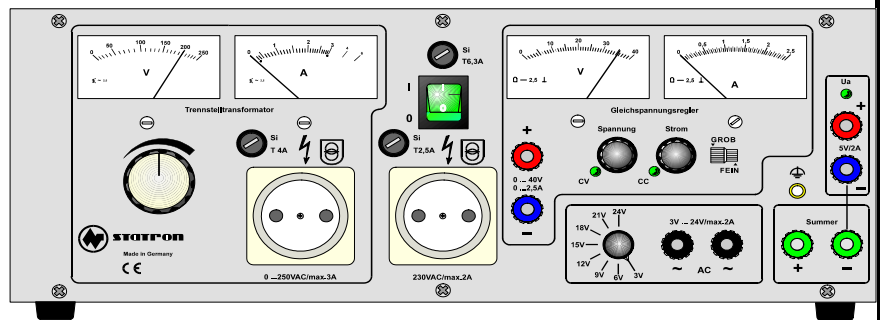
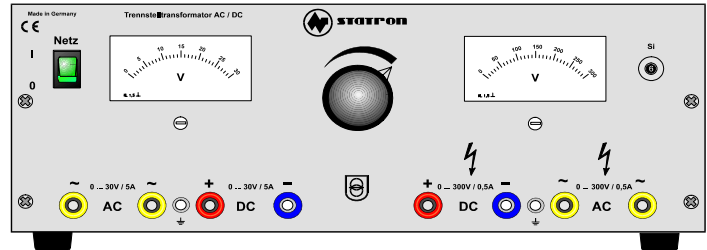
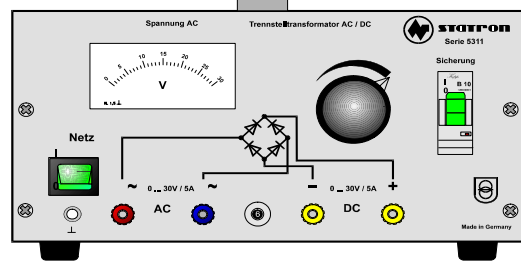




Equipment qualities

- thermal circuit breaker on front panel
- output mass free
- galvanically separated to input
- all purpose
- lighted switch
- circuit indicator type 5311.3
- raising delay



technical parameter

Type		5311.0		5311.1		5311.2		5311.3		
		isolating transformer				isolating transformer and dc voltage regulator				
AC	output voltage AC	0-30V	0-30V	0-30V	0-300V	0-250V	230V		3-24V	
AC	output current AC	5 A	10 A	5 A	0,5 A	3 A	2 A		2 A	
DC	output voltage DC	0-30V	0-30V	0-30V	0-300V				5V	0-40V
DC	output current DC	5 A	10 A	5 A	0,5 A				3A	0-2,5A
	total power	150W	300W	150W	1373W					
	dimensions WxHxD mm	260x140x250		360x140x250		445x180x330				
	weight kg	11 kg	15kg	15 kg		31,5 kg				
AC	input voltage	230V +6/-10% 50 Hz								
	display	voltage AC		voltage DC		voltage and current AC and DC				
	display type 5311.20			digital for V and C						
	display									U und I
	CV stability net +5/-7%	not stabilisiered				5mV	20mV			
	CV stability load 0-100%	not stabilisiered				30mV	40mV			
	CV remaining ripple Ueff	not stabilisiered				1mV	2mV			
	adjuster U output / I output	adjusting knop transformer				no	switch	wirewound poti		
	safety class	I								
	color	front panel RAL 7035 / corpus RAL 7036								
	composition	grip				circuit indicator, buzzer				
	connector input	ac power line								
	connector output	4mm sockets			fermale			4mm sockets		
AC	testing voltages	EN 61010 ; EN 61558-2-4								
	operating temperature	0 - 35°C								
	max. relative humidity	90% by 35°C								
	electromagnetic compatibility	EN 61000-6-3 ; EN 61000-6-2								